

MONTHLY MEMBERSHIP PROGRESS REPORT

District 322C1

Results as of: 5/31/2026

GMT:

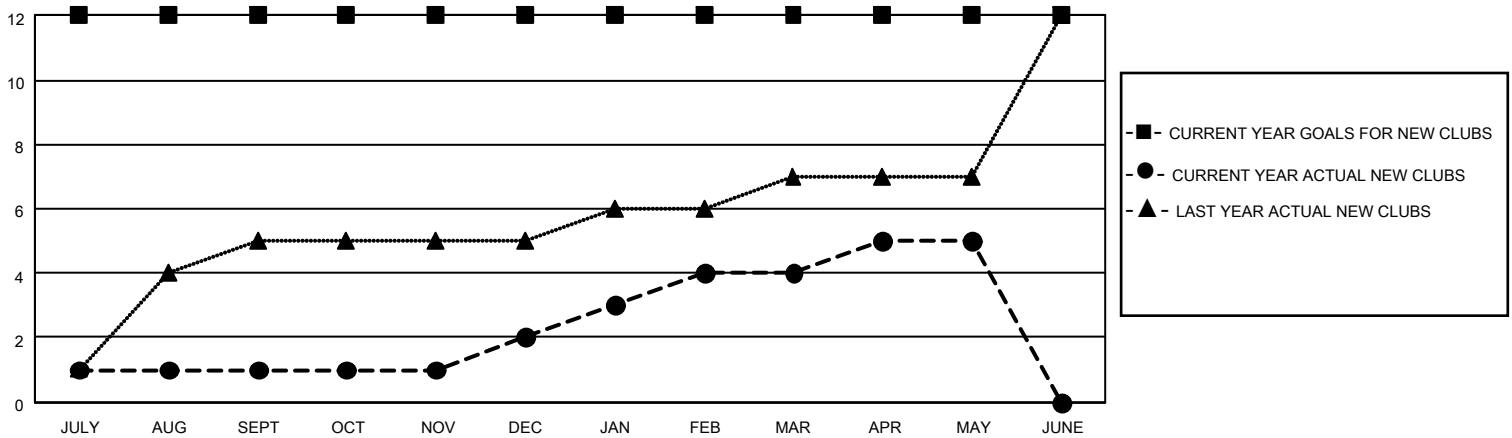
LOCATION INDIA

GMT CA

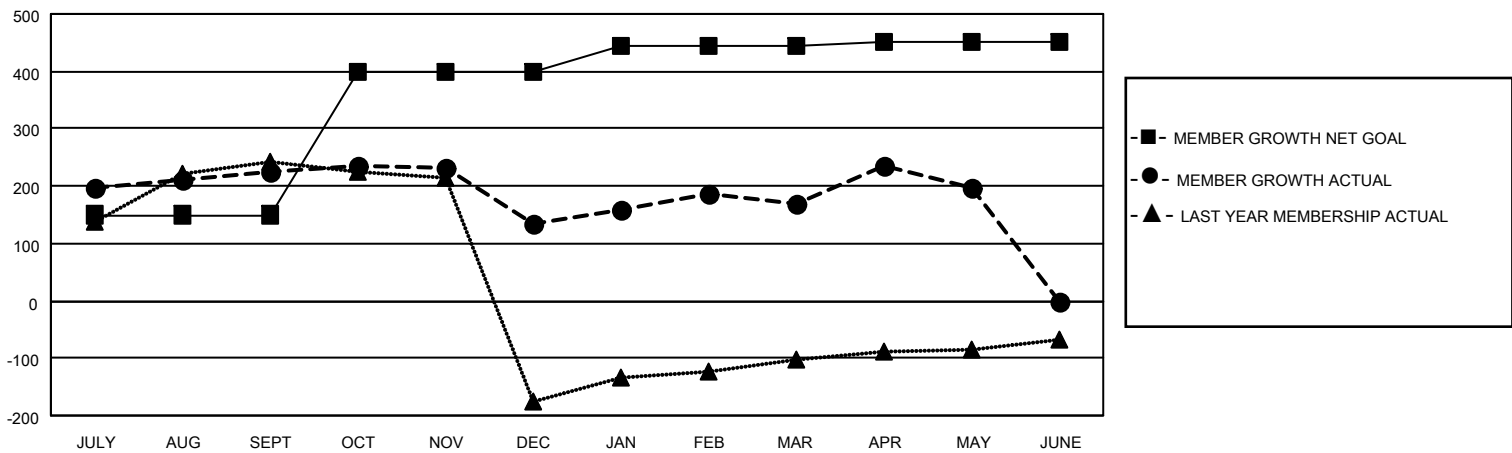
Clubs			
RESULTS FOR 2025-2026			
QUARTER	NEW CLUB GOAL	NEW CLUBS	DROPPED CLUBS
JULY/AUG/SEPT	12	1	1
OCT/NOV/DEC	0	1	4
JAN/FEB/MAR	0	2	2
APR/MAY/JUNE	0	1	0

Members			
RESULTS FOR 2025-2026			
QUARTER	MEMBER GROWTH NET GOAL	MEMBER GROWTH ACTUAL	DROPPED MEMBERS ACTUAL (including transfers)
JULY/AUG/SEPT	150	294	40
OCT/NOV/DEC	250	113	203
JAN/FEB/MAR	45	103	45
APR/MAY/JUNE	5	96	62

GOALS AND ACTUAL NEW CLUBS CUMULATIVE



GOALS AND ACTUAL MEMBERS CUMULATIVE



DROPPED CLUBS: 7

86 CLUBS OF 119 ADDED 1 OR MORE NEW MEMBERS

GENDER DISTRIBUTION

MALE 2,702 (74.81%)
FEMALE 910 (25.19%)

DROPPED MEMBERS

DECEASED	10
CLUB CANCELLED	97
OTHER	242
TOTAL	349

[CLICK HERE FOR CUMULATIVE MEMBERSHIP DATA](#)

TOTAL FAMILY UNIT MEMBERS	1,500
FAMILY MEMBERS PAYING HALF DUES	847